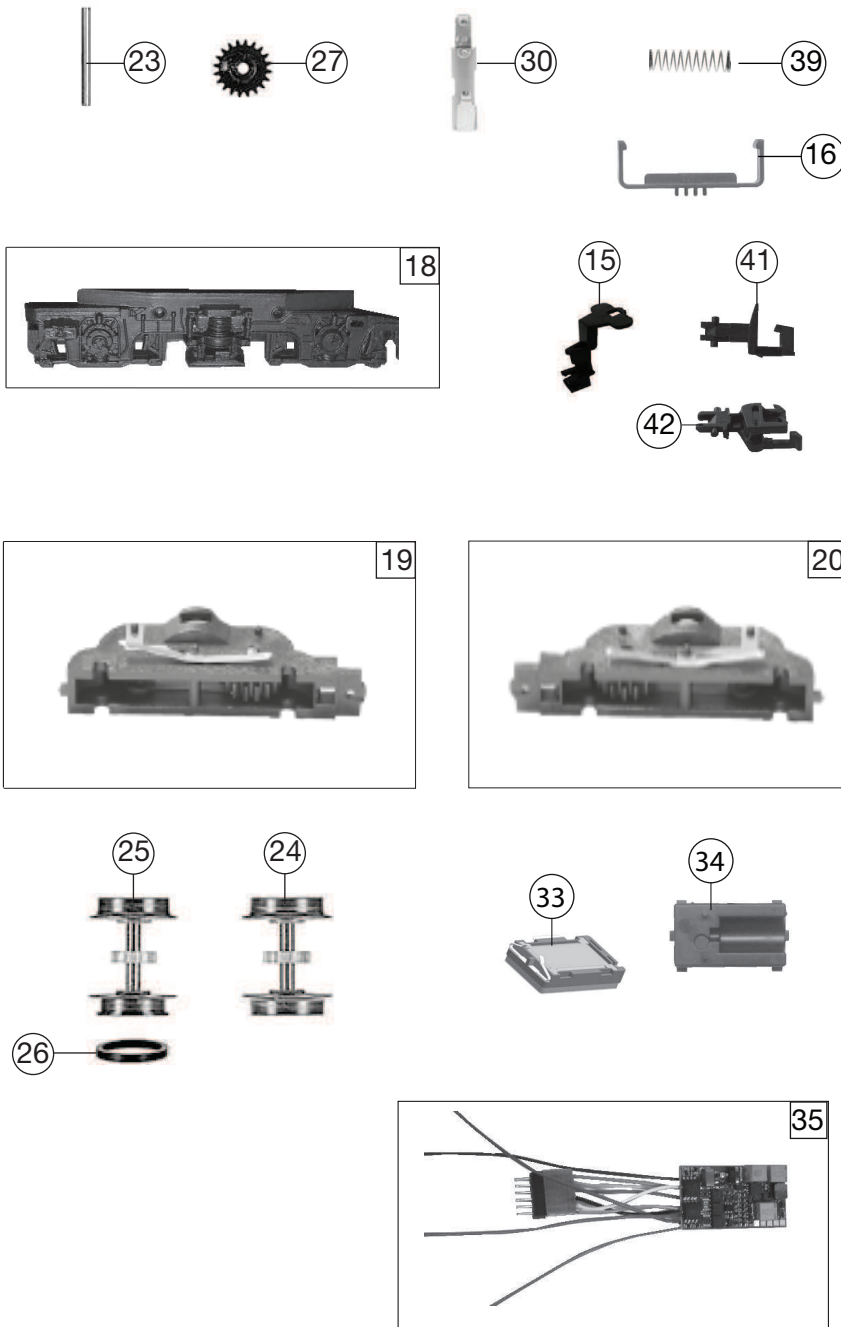


| 733878 BR 110.3 DB AG | | = N | |
|-----------------------|---|----------------------|------------------------------|
| Pos. Nr. Pos.no. | Beschreibung Description | Art.-Nr. Art. no. | Preisgruppe Price bracket |
| 1 | LOKGEHAE.KPL.O.PANTOGR.733808 Body assembly complete w/o pantograph | 10733808 | 032 |
| 2 | LICHTABDECKUNG -SATZ Light cover set | 12733802 | 011 |
| 3 | LICHTMASKE Light mask | 12733803 | 006 |
| 4 | LICHTLEITER-SATZ (gestempelt) Light conductor set (printed) | 13733805 | 003 |
| 5 | FENSTER-SATZ f.733808 Window set | 15733808 | 018 |
| 6 | TRAVERSE F.SCHERENPANTO.GRAU Traverse for double arm pantograph | 00177383 | 003 |
| 7 | SCHALTER-SATZ Switch set | 18733603 | 006 |
| 8 | ZUGHAKEN-BREMSKUPPLUNG-SATZ Coupling hook,break coupling set | 19733001 | 012 |
| 9 | PFEIFE Whistle | 00197604 | 003 |
| 10 | ANTENNE LANG Antenna long | 00197802 | 002 |
| 11 | ZUGHEIZKABEL Train heating cable | 19793200 | 005 |
| 12 | WISCHER -SATZ Set of wipers | 19793700 | 007 |
| 13 | GRIFFSTANGEN-SATZ f. 733808 Handles set | 19797900 | 005 |
| 14 | TRITT-SATZ f.733808 Treadle set | 19798000 | 005 |
| 15 | KUKU-DEICHSEL Short coupling reception | 38702700 | 007 |
| 16 | HALTEBÜGEL FÜR KUPPLUNG Coupling support | 38902000 | 007 |
| 17 | LOKFAHRGESTELL OHNE MOTOR Loco chassis w/o motor | 40733001 | 018 |
| 18 | DREHGESTELLRA.SCHWARZ 733808 Bogie framework black | 41733808 | 011 |
| 19 | DREHGESTELLBLOCK KPL.VORNE M.S Bogie block complete front | 45733001 | 017 |
| 20 | DREHGESTELLBLOCK KPL.HINTEN M. Bogie block complete rear | 46733001 | 017 |
| 21 | MOTOR Motor | 50733002 | 028 |
| 22 | KOHLLENHALTER Brush holder | 00507801 | 001 |
| 23 | ACHSE z.DG-BEFESTIGUNG Bogie fixation pin | 00527002 | 002 |
| 24 | LOKRADSATZ M.Z.O.N. ROT Loco wheelset w.gear wheel, w/o trac. tyre red | 00537018 | 012 |
| 25 | RADS.M.Z.M.1 NUT BR 103/110/11 Wheelset complete with gear wheel, 1 trac. tyre | 00537037 | 013 |
| 26 | HAFTREIFEN Traction tyre | 00547002 | 001 |



| 733878 BR 110.3 DB AG | | | | | |
|-----------------------|--|----------------------|------------------------------|--|--|
| Pos. Nr. Pos. no. | Beschreibung Description | Art.-Nr. Art. no. | Preisgruppe Price bracket | | |
| 27 | ZAHNRAD Z:20 SCHWARZ Gear wheel Z=20 black | 00567101 | 003 | | |
| 28 | SCHNECKE D = 4MM L = 7MM Worm gear D=4mm, L=7mm | 00567605 | 006 | | |
| 29 | KONTAKTBLECH-SATZ Contactor sheet set | 61780300 | 007 | | |
| 30 | KONTAKTBUJEGEL F.DREHGEST.LOKS Contact plate for bogie type locos | 00657004 | 013 | | |
| 31 | MOTORPLATINE KPL. INCL. LICHTP Motor PCB incl. Light PCB | 65719200 | 020 | | |
| 32 | SCHERENSTROMABNEHMER Double arm pantograph | 67707800 | 020 | | |
| 33 | LAUTSPRECH.9x16 FOX M.KLEBEPAD Speaker 9x16 with adhesive pad | 68701100 | 016 | | |
| 34 | LAUTSPRECHERAUFNAHME Loudspeaker reception | 68701800 | 016 | | |
| 35 | SOUNDDECODER Sound-decoder | 68733071 | 041 | | |
| 36 | SCHRAUBE M1,7x2,5 Screw M1,7x2,5 | 70900035 | 002 | | |
| 37 | STECKPUFFER (GEWÖLBT) Plug-in buffer (curved) | 00757011 | 002 | | |
| 38 | STECKPUFFER (FLACH) Plug-in buffer (flat) | 00757012 | 002 | | |
| 39 | DRUCKFEDER Pressure spring | 00767012 | 001 | | |
| 40 | ERSATZ SCHLEIFKOHLEN Carbon brushes set | 6518 | --- | | |
| 41 | STANDARD-STECKKUPPLUNG Standard clip-in coupling | 9525 | --- | | |
| 42 | PROFI-STECKKUPPLUNG Profi clip-in coupling | 9545 | --- | | |

Ersatzteile erhalten Sie direkt unter www.fleischmann.de, bei Ihrem Fachhändler, oder Ihrer Landesvertretung.
Spare parts can be ordered directly at www.fleischmann.de and from your local dealer or country representative.